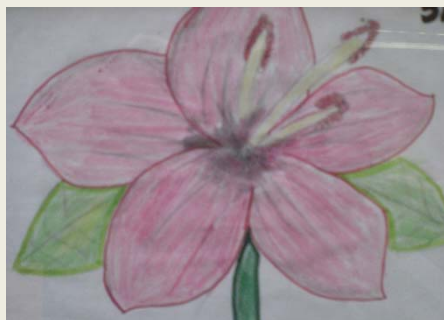


What is an Education, Health and Care Plan?

- An Education, Health and Care Plan (EHC plan) is a legal document.
- It supports children with more complex Special Educational Needs and/or Disabilities.
- An EHC plan sets out the extra help and support a child needs to achieve what they want in life.
- It is designed to give you and your child increased choice and control.
- The EHC plan looks at what is important for your child now and in the future.
- They can be given to a child or young person between the ages of 0 – 25.



Who needs an Education, Health and Care Plan?

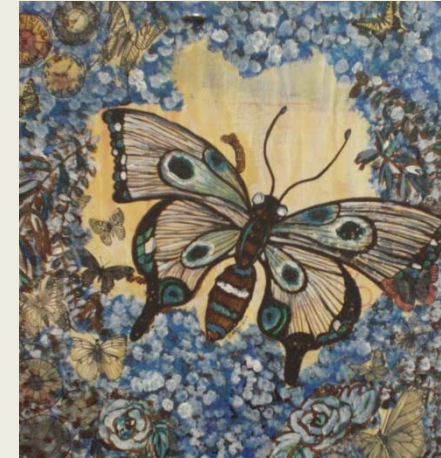
An EHC plan is for children and young people who have more complex needs.

Children or young people who will need more support than is normally available in a mainstream school.

EHC plans can include health and/or social care needs as well as an educational need.

Parents, family
and/or friends.

Social
Workers



Who can request an
Education, Health and
Care Plan?

Doctors,
Health
Visitors and
other medical
professionals.

Teachers

The child or
young person

An EHC request form can
be found at:
https://www.birmingham.gov.uk/downloads/file/8200/request_for_ehc_assessment_form

A request can be
made by anyone who
thinks an assessment
may be necessary.



What does and EHC Plan Look Like?

The Plan has 11 sections. These are:

Section A – The views, hopes and interests of the child and their parents.

Section B – Strengths and Special Educational Needs in Communication and Interaction, Cognition and Learning, Social, Emotional and Mental Health and Sensory and/or physical.

Section C - Strengths and Health Needs.

Section D - Strengths and Social Care.

Section E - Outcomes.

Section F – Special Educational Provision.

Section G – Health Provision.

Section H – Social Care Provision.

Section I – Education Placement.

Section J – Resources.

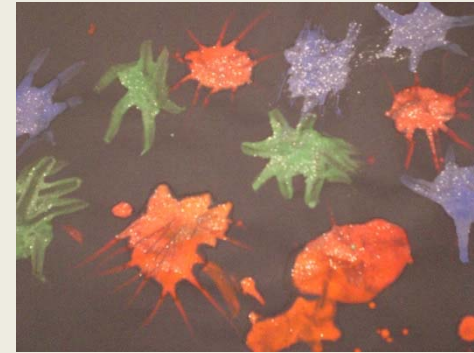
Section K – Advice and information (Appendices).

EHC plan template:

https://www.birmingham.gov.uk/downloads/file/8192/ehc_plan_template_18052016



Education and Health Care Plan Process



Education and Health Care Plan Process continued

Up to 20
weeks

Step 6

EHC plan is
finalised

My review

Step 7

Implement
and Review

Further
details
available at...

https://www.birmingham.gov.uk/downloads/file/8190/ehc_pathway_revised_130815





Reviewing an EHC Plan

- The plan must be reviewed at least once a year to monitor progress and make necessary changes.

- EHC plans stay in place until the child leaves education or professionals decide it is no longer needed.
- If a child moves to another authority the plan will transfer with them.