

Blakesley Hall School

Newsletter

Autumn Term 3/12

Date: Wednesday 31st October 2012

Tel: 0121 783 2148 Website: www.blakesley.bham.sch.uk



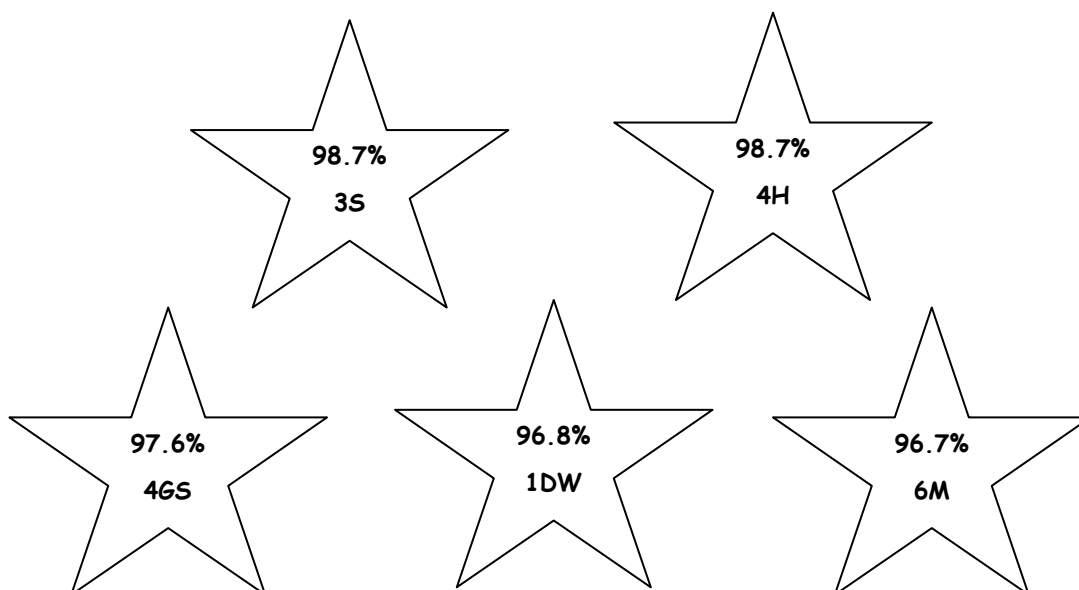
DATES	YEAR/CLASS	EVENT
Week Commencing 5th November	Whole School	Open Week
Week Commencing 12th November	Year 6	Stansfeld Residential Trip
Thursday 15th November	Whole School	Closed for Elections—Police and Crime Commissioner
Thursday 13th December	Whole School	School Christmas Fayre
Friday 21st December	Whole School	Break up for Christmas Holiday
Monday 7th January 2013	Whole School	Children return to school

**We trust that those who celebrate
had an enjoyable Eid celebration.**



ATTENDANCE

Best attending Classes for week ending 19th October 2012



HEALTHY TUCK



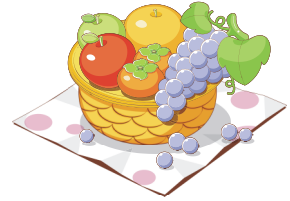
KEY STAGE 2

Please could parents make sure your children have only one piece of healthy food in their tuck, children are not allowed to bring in any sweets, crisps and chocolates — **Monday to Thursday**. Only water or still drinks allowed no fizzy or energy drinks for tuck please.

Children have a choice of what to bring on **Fridays**.



KEY STAGE 1 AND RECEPTION have a piece of fruit everyday provided for them.



Operation Christmas Child Samaritans Purse



Operation Christmas Child is a charitable organisation that delivers gifts to children in under developed countries all over the world. As a school we would like to donate individual shoeboxes to children who may not necessarily receive a gift this Christmas. We are aiming to fill at least 2 shoeboxes per class. If you would like to make a donation we would be very grateful. Choose an item from the list:

Toys

soft toys, finger puppets, jigsaw, yo-yos, cars, trucks, tennis balls.

Educational

pens, pencils, colouring book, picture/puzzle book, chalks, stickers.

Hygiene

toothbrush, toothpaste, hairbrush, comb, hair clips, bars of soap.

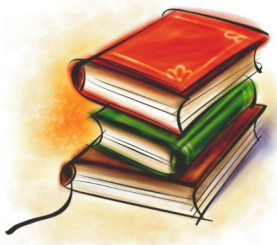
Other items

sweets (sell by date should be March 2013).

No war related items

guns, soldiers, knives, chocolates, liquids, scissors, hand knitted toys

Bring your item to school and we will make up our Christmas boxes. Any questions please see your child's class teacher. Many thanks for your support to make the life of an under privileged child happier this Christmas.



Raffle

We raised £80.50 with our Raffle and Sweet Sale, THANKYOU to all parents and pupils who supported us and congratulations to Mrs Roadley who won the Pamper Hamper Raffle. All funds raised will now be used to buy resources for the children to enjoy in the Library Lunchtime clubs.



Next week is Open Week

Please make sure you have an appointment with your child's class teacher. As well as meeting teachers there will be opportunities to sample and sign up for school dinners in the large hall and the computer suite will be open for you to complete our usual questionnaire online as well as find out about curriculum and resources' to support your children's learning online.

Please note 4H parents' appointments will take place week commencing 26th November 2012.



WEBSITE NEWS—You can follow us on twitter @BHPS_1

Christmas Fayre at Blakesley Hall Primary School

Every year Blakesley Hall Primary School hosts a fun packed day for the children to participate in games and activities.

We would like some donations to make this event as popular as previous years.

If you have any unwanted **teddy bears** clean and in good condition please bring them into school so that we can use them for our Christmas Fayre.

Please bring in any donations to the school office as soon as possible.

Thanks for your support.



Christmas Fundraising and Upcoming Activities

Shoe Boxes (Samaritans Purse)	Wednesday 14th November
Christmas Fayre	Thursday 13th December
Christmas Lunch with invited guests	Wednesday 12th December
Carol service (KS2)	Thursday 20th December at 10am
Nativity (KS1)	Tuesday 18th December at 9.30am